

ABS RFID Pallet Tag with Two Installation Methods- spec sheet



This ABS Pallet Tag is one of the anti-metal tags with a special design that has two installation methods. The 3M adhesive layer makes it can be used on smooth surfaces, such as metal, glass. And the two-hole design enables it to install on wooden pallets.

If you want this ABS anti-metal Tag to be powerful, you can choose an RFID chip with excellent performance embedded in it. In Xinyetong, there are many options for RFID chips. If you are not sure what chips to use, feel free to contact us.

Parameters

Item	ABS RFID Pallet Tag	Material	ABS	Working Temperature	-25°C to 65°C
Eeprom	depend on chips	Size	customized	Data Retention Time	10 years
Chip	HF chips or UHF chips (depend on applications)	Reading Distance	0-10cm	Installation mode	3M300LSE back glue, strong glue
Frequency	13.56 MHz, 860-960 MHz	Write Endurance	100000 times		

Dimensional Diagram

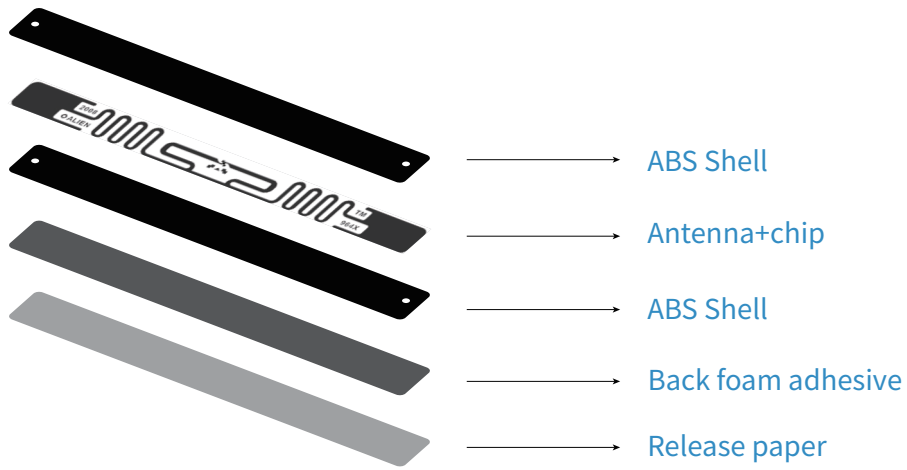
Available chips

HF 13.56 MHz Chips

Chip Name	Protocol	Capacity	Frequency
Ntag213	ISO14443A	180 byte	13.56 MHz
Ntag215	ISO14443A	540 byte	13.56 MHz
Ntag216	ISO14443A	924 byte	13.56 MHz
MIFARE Classic 1K	ISO14443A	1 KB	13.56 MHz
MIFARE Classic 4K	ISO14443A	4 KB	13.56 MHz
MIFARE Ultralight EV1	ISO14443A	80 byte	13.56 MHz
MIFARE Ultralight C	ISO14443A	192 byte	13.56 MHz
ICODE SLIX	ISO15693	1024 bits	13.56 MHz

860~960 MHz UHF Chips

Chip Name	Protocol	Capacity	Frequency
Alien H3	ISO18000-6C	512 bits	860~960 MHz
Impinj Monza 4	ISO18000-6C	96 bits	860~960 MHz
UCODE G2iL	EPCglobal Class1Gen2	128 bits	860~960 MHz



Feature

- ▶ Two installation methods, suitable for more applications
- ▶ HF chips or UHF chips are available
- ▶ Anti-collision communication protocol
- ▶ High-temperature resistance & Corrosion resistance
- ▶ Waterproof and shockproof
- ▶ Strong impact resistance
- ▶ Support silk-print, including text, pattern, logo, etc.

APPLICATIONS

- Warehouse shelves and pallets management
- IT case management
- Middle-sized and large metal container management
- Electrical box and electrical facilities management
- Indoor & Outdoor Metal office facilities management
- Metal container management
- Vehicle management and tracking
- Other metal applications