

## Mifare 1k Inlay- spec sheet

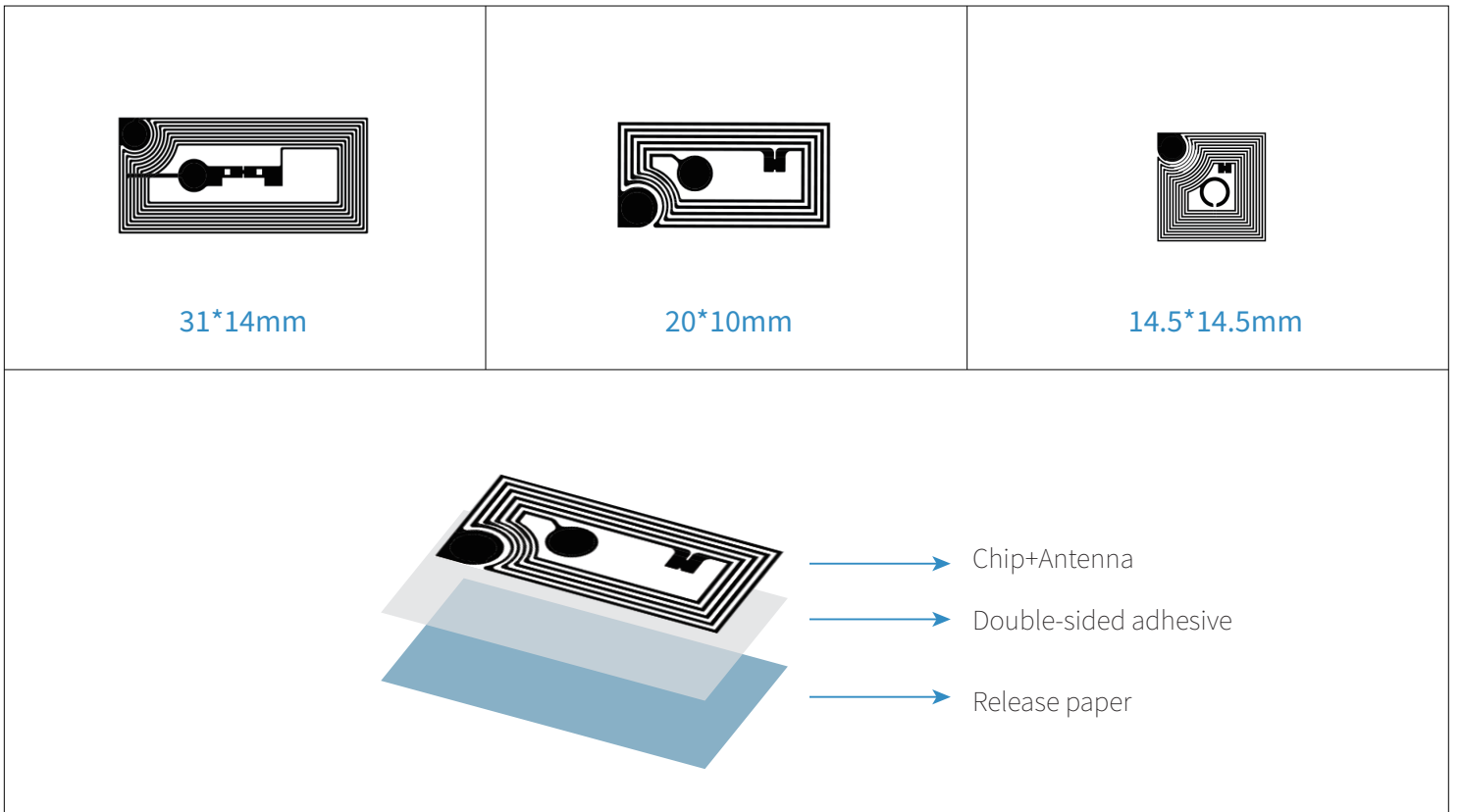


What is an inlay? The inlay is a term specific to the RFID industry. It is a semi-finished product, which can be encapsulated into different types of RFID tags. According to whether it contains back glue, Inlay is divided into Dry Inlay and Wet Inlay. RFID inlay supports a variety of chips, and the Mifare 1k Inlay is the one with the Mifare classic 1k chip.

### Parameters

Item	Mifare 1K Inlay	Material	PVC, PET, Coated paper	Working Temperature	-25-65°C
Protocol	ISO14443A	Size	Custom	Data Retention Time	10 years
Chip	Mifare 1K	Crafts Available	Logo or number printing, Bar code QR code, etc.	Printing Options	Silk-screen printing, Laser Engraving, CMYK full color, Pantone, etc.
Frequency	13.56MHz	Reading Distance	0-10cm	Write Endurance	100000 times
Eeprom	1K				

### Dimensional Diagram



## Available chips

### HF 13.56 MHz Chips

Chip Name	Protocol	Capacity	Frequency
Ntag213	ISO14443A	180 byte	13.56 MHz
Ntag215	ISO14443A	540 byte	13.56 MHz
Ntag216	ISO14443A	924 byte	13.56 MHz
MIFARE Classic 1K	ISO14443A	1 KB	13.56 MHz
MIFARE Classic 4K	ISO14443A	4 KB	13.56 MHz
MIFARE Ultralight EV1	ISO14443A	80 byte	13.56 MHz
MIFARE Ultralight C	ISO14443A	192 byte	13.56 MHz
ICODE SLIX	ISO15693	1024 bits	13.56 MHz

## Feature

- ▶ Contactless transmission of data and supply energy
- ▶ Data integrity of 16-bit CRC, parity, bit coding, bit counting
- ▶ Typical ticketing transaction time of <100ms (including backup management)
- ▶ Operating distance up to 100mm (depending on antenna geometry and reader configuration)
- ▶ Various sizes and chips are available
- ▶ Operating frequency of 13.56MHz
- ▶ Data transfer of 106 Kbit/s

## APPLICATIONS

- Retail Environment
- Games & Toys
- Electronics Pairing
- Social Media
- Media & Ads
- Product Authentication
- Library Management
- Application in a variety of RFID tags  
RFID wristbands, RFID cards, etc.