

## RFID PET Blocking Sleeve-spec sheet



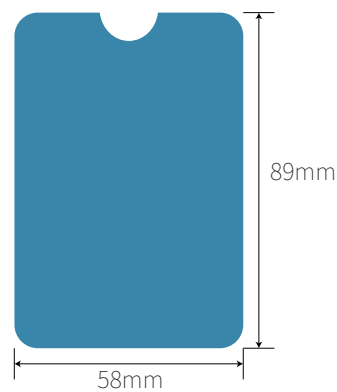
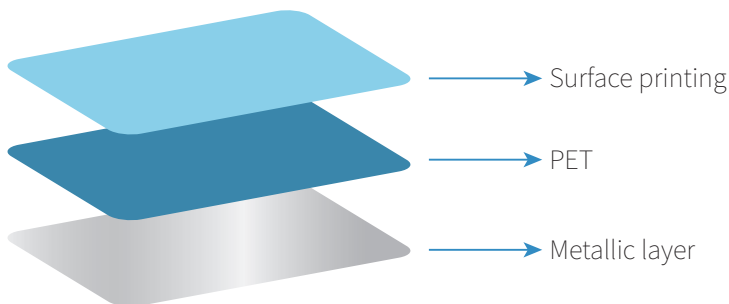
This is not an ordinary card sleeve, and it is called RFID PET blocking sleeve. Except for the PET material, it uses metal material, usually aluminum foil. That makes it have an ability to block RF signals to protect the security of your credit card. So this a multi-function card sleeve, waterproof, anti-demagnetization, and anti-theft of information.

There are many colors, styles that you can choose. And you can customize it to define your style. Or put your logo and other company information on the RFID sleeve for marketing. Plus, it's cheap and practical, and it's worth having for anyone who needs a sense of security.

### Parameters

Item	RFID PET Blocking Sleeve	Color	Can be printing as your requirement	Packing	100pcs per box, 500 /1000/ 2000 pcsper carton
Material	PET + Metallic layer	Size	89*58mm for credit cards ; 135*92mm for passport sleeve or customized	Color	full-color printing
Blocking Frequency	125khz/13.56mhz/860-960mhz	Craft	Spot UV, silver /gold hot stamping	Printing Method	CMYK offset printing
Block Type	LF/HF/UHF signals	Block Area	Mainly block RFID credit card, debit card, and passport, stop RFID signal to copy your card information.		

### Dimensional Diagram



### Features

- ▶ Two specifications:89×58mm for RFID smart cards; 135\*92mm for RFID passport
- ▶ Easy to use, just put your RFID credit card into the RFID blocking sleeve
- ▶ Anti demagnetization and waterproof
- ▶ Good shielding performance, fully protect the card information security
- ▶ An RFID blocking sleeve usually holds one RFID credit card
- ▶ Various styles, crafts, colors that you can choose
- ▶ Support for customized services
- ▶ Blocking Frequency: 125KHz, 13.56MHz, 860-960 MHz

### APPLICATIONS

- RFID bank card
- RFID credit card
- RFID business card
- RFID bus card
- RFID subway card
- RFID insurance medical card
- RFID membership card
- RFID access card
- Other RFID cards