

Asset Management RFID Soft flexible Anti-Metal Tag-spec sheet



RFID asset management Soft flexible Anti-Metal Tag can help companies keep track of what assets are whereby linking a specific item to a specific location. they will do that easily, often without a requirement to examine individual items. RFID systems also can help improve accountability for asset checks by identifying just which staffer checked an item during a particular location. they will also monitor the removal of assets from a site.

Parameters

Item	Asset Management RFID Soft flexible Anti-Metal Tag	Color	black or Customization	Working Temperature	-25°C to 65°C
Material	PET/Aluminum Foil/Foam	Printing Options	Silk-screen printing, Laser Engraving, CMYK full color, Pantone, etc.	Frequency	EU Standard 865-868mhz US Standard 902-928mhz
Eeprom	EPC 128bits, User 512bits	Chip	Impinj Monza MR6-P or Customization	Write Endurance	100000 times
Protocol	ISO/IEC 18000-6C, EPC Class1 Gen2	Reading distance	0-10m		

Available chips

860~960 MHz UHF Chips

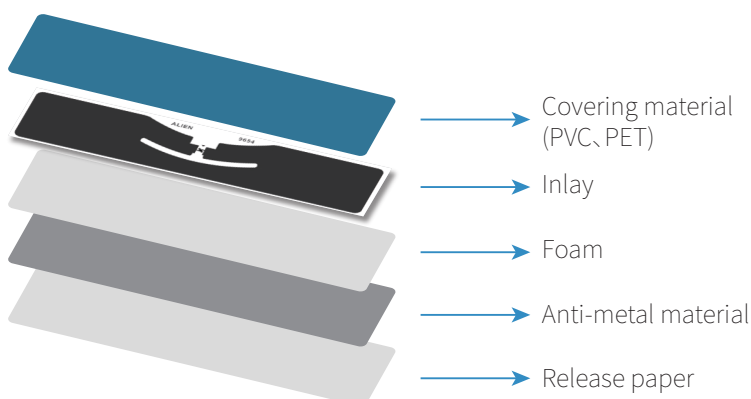
Chip Name	Protocol	Capacity	Frequency
Alien H3	ISO18000-6C	512 bits	860~960 MHz
Impinj Monza 4	ISO18000-6C	96 bits	860~960 MHz
UCODE G2iL	EPCglobal Class1Gen2	128 bits	860~960 MHz

Feature

- ▶ Can be used on metal objects
- ▶ Can be used on surface assets
- ▶ Reading distance can reach 10m
- ▶ Can read in groups
- ▶ Can print in batch

Application

- ▶ Item level management
- ▶ RFID Asset tracking management
- ▶ Hospital equipment management
- ▶ Metal devices supply chain management



Summary Table

UHF Flexible Anti-metal Tag (The RFID printer can be used to print and write codes at the same time)							
Image	Model	Chip	Size	Maximum Reading Distance	Quantity Per Roll	Customization	
	XYT-9522 European/American standard	Impinj Monza R6-P User area memory 32(64)bit EPC area memory 128(96)bit	95x22x1.25mm	8 m	500 sheets	Printing Coding 3M adhesive etc.	
	XYT-6535 both standard available		65x35x1.25mm	6 m	400 sheets		
	XYT-5515 European/American standard		55x15x1.25mm	4 m	500 sheets		
	XYT-3015 both standard available		30x15x1.25mm	0.7 m	800 sheets		
	XYT-6025 European/American standard		60x25x1mm	5 m	500 sheets		
	XYT-7030 European/American standard		70x30x1mm	6 m	500 sheets		
	XYT-8040/20 European/American standard		80x40x1mm	7 m	300 sheets		
			80x20x1mm	7 m	500 sheets		
	XYT-6535 American Standard		Monza 4E User area memory: 128bit EPC memory: 496bit	65x35x1.25mm	6 m		400 sheets
	XYT-7030 American Standard		Monza 4QT User area memory: 512bit EPC memory: 128bit	70x30x1mm	5 m		500 sheets
	XYT-6406 European/American standard	NXP Ucode 8, EPC 128bit	64x6x1mm	3 m	500 sheets		
Support printers: Zebra ZT410 Silverline, Sato CL4NX, Printronix T4000, Postek Tx3r							