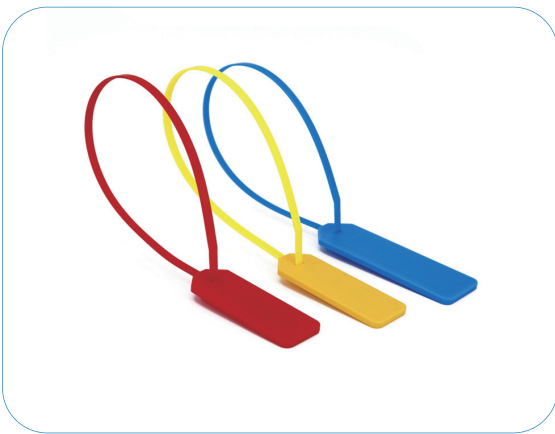


RFID Cable Tie Tag-spec sheet



RFID Cable Tie Tag, you can also call the Zip Tie tag. For its name, different countries have different names. It is an RFID tag that can easily tie to the target object.

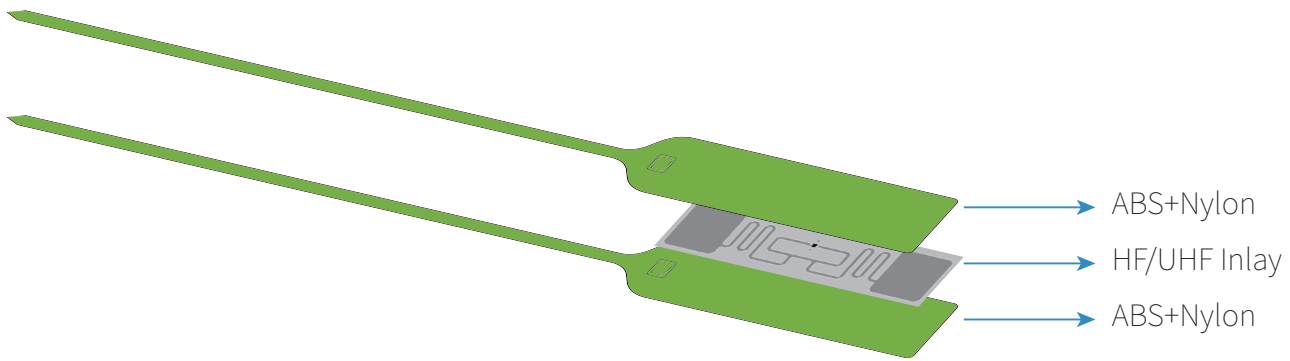
The RFID tag is in the external position of the binding, not affected by the material of the binding. It features stable reading, moisture resistance, high-temperature resistance, and easy to use.

RFID Zip Tie Tag is commonly used to bundle electrical cables but can be used for many other things. It is great for logistics tracking, power line classification, asset tracking management, etc.

Parameters

Item	RFID Cable Tie Tag	Color	Multicolor Optional	Working Temperature	-25°C to 65°C
Material	ABS/Nylon	Size	325*27mm, 448*28mm 332*30mm, 332*30mm, etc.	Data Retention Time	10 years
Write Endurance	100000 times	Chip	Alien H3, Monza 4E, 4D, 4QT, R6, R6P N213, N216, Ult, F08, S50	Memory	Depend on chip
Frequency	13.56 MHz, 860~960 MHz	Reading Distance	0-10cm	Protocol	ISO18000-6C, EPC C1 GEN2

Dimensional Diagram



Available chips

HF 13.56 MHz Chips

Chip Name	Protocol	Capacity	Frequency
Ntag213	ISO14443A	180 byte	13.56 MHz
Ntag215	ISO14443A	540 byte	13.56 MHz
Ntag216	ISO14443A	924 byte	13.56 MHz
MIFARE Classic 1K	ISO14443A	1 KB	13.56 MHz
MIFARE Classic 4K	ISO14443A	4 KB	13.56 MHz
MIFARE Ultralight EV1	ISO14443A	80 byte	13.56 MHz
MIFARE Ultralight C	ISO14443A	192 byte	13.56 MHz
ICODE SLIX	ISO15693	1024 bits	13.56 MHz

860~960 MHz UHF Chips

Chip Name	Protocol	Capacity	Frequency
Alien H3	ISO18000-6C	512 bits	860~960 MHz
Impinj Monza 4	ISO18000-6C	96 bits	860~960 MHz
UCODE G2iL	EPCglobal Class1Gen2	128 bits	860~960 MHz

APPLICATIONS

- Power line classification
- Telecommunications line management
- Warehouse management
- Guardianship management
- Express parcels
- Asset tracking management
- Sealing of poultry, food, hairy crabs
- Other Applications

Feature

- ▶ Lightweight, easy to install, high safety, indoor and outdoor can be used.
- ▶ Multi-tag identification, high sensitivity, high speed, with a unique global identification code
- ▶ Waterproof, high temperature resistant, moisture resistant, stable performance
- ▶ Label unidirectional structure design, non – detachable
- ▶ Support customization, a variety of colors and a variety of chips optional
- ▶ Free from metal interference, working well on the metal surface
- ▶ Waterproof, shock-proof, and drop resistant
- ▶ Stable performance, safe and reliable