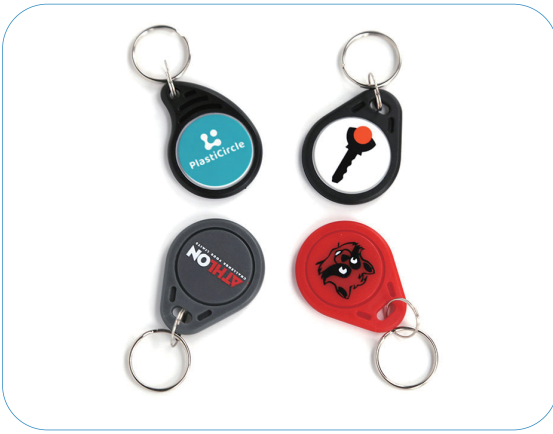


## 125KHz RFID Keyfob-spec sheet



125KHZ LF RFID Keyfob is also known as Keytag, Keychain, and it is an electronic device used for Access Control, Its applications can be witnessed at Housing, Underground Parking Lot,

Shopping Mall, library, E-Campus, Security Protection, Transportation and E-payment, which make our life comfortable.

### Parameters

Item	125KHz RFID Keyfob	Color	black, yellow, blue, etc	Reading distance	0-10cm
Material	ABS	Size	Custom	Data Retention Time	10 years
Chip	TK4100, EM4200, EM4305, T5577.	Memory	64bits, 128bits, 512 bits, 363 bits	Protocol	ISO1174
Frequency	125KHZ	Printing Options	Silk-screen printing, etc.		

### Dimensional Diagram


		<p>                 → ABS material                  → Coil+Chip                  → ABS material             </p>	

## Available chips

### LF 125kHz Chips

Chip Name	Protocol	Capacity	Frequency
TK4100	ISO 11784/11785	64 bits	125 kHz
EM4200	ISO 11784/11785	128 bits	125 kHz
EM4305	ISO 11784/11785	512 bits	125 kHz
T5577	ISO 11784/11785	330 bits	125 kHz

## APPLICATIONS

- access control, hotel locks, staff attendance, and school campus access and payment control, identification and security systems, parking lot entry and payment, social security management, transportation payment, municipal and ancillary service payment, etc.